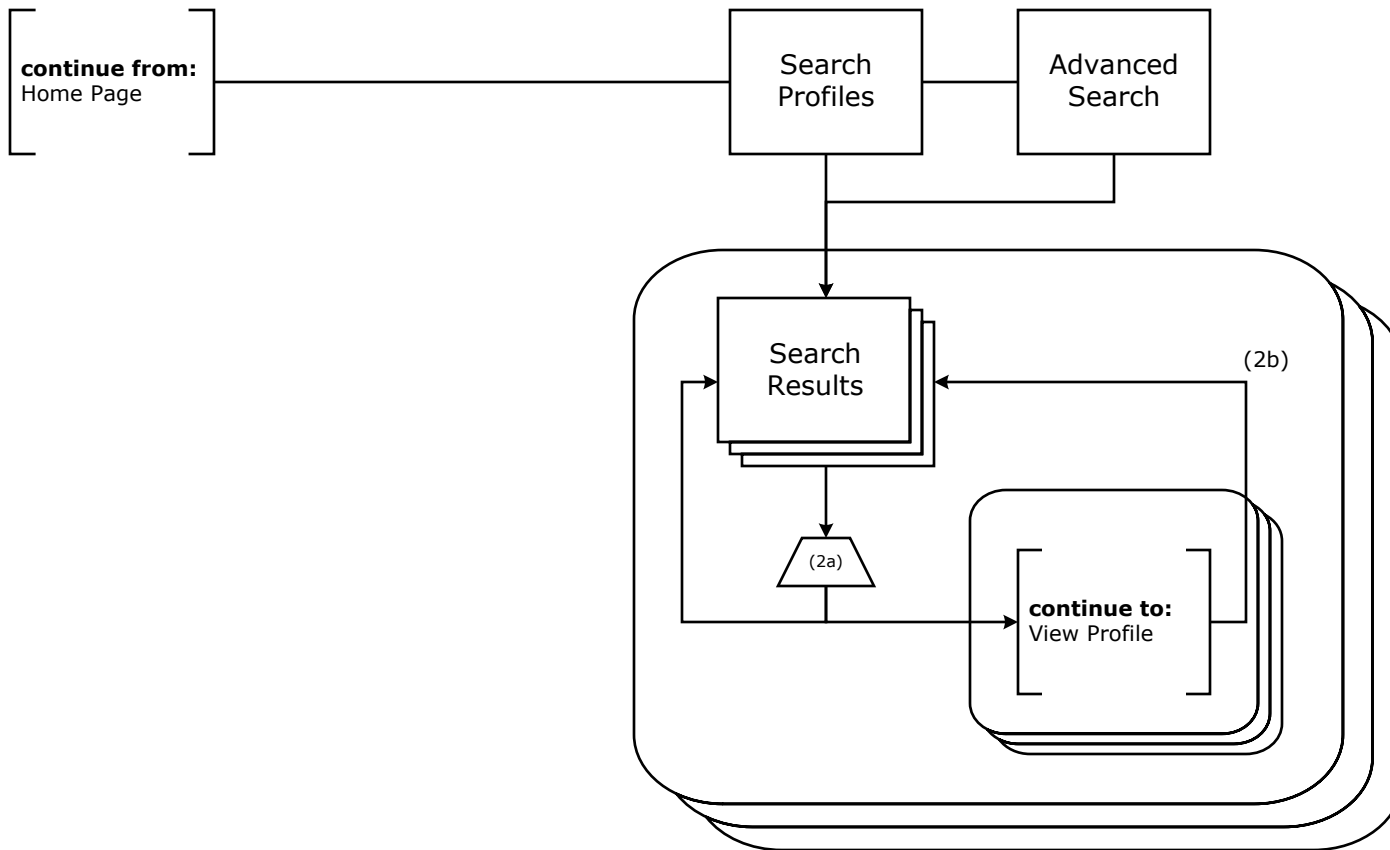


(1a) Page will open in popup window.

(1b) Link will be available if the user is a unit Administrator or is authorized by a unit Administrator to view Reports.

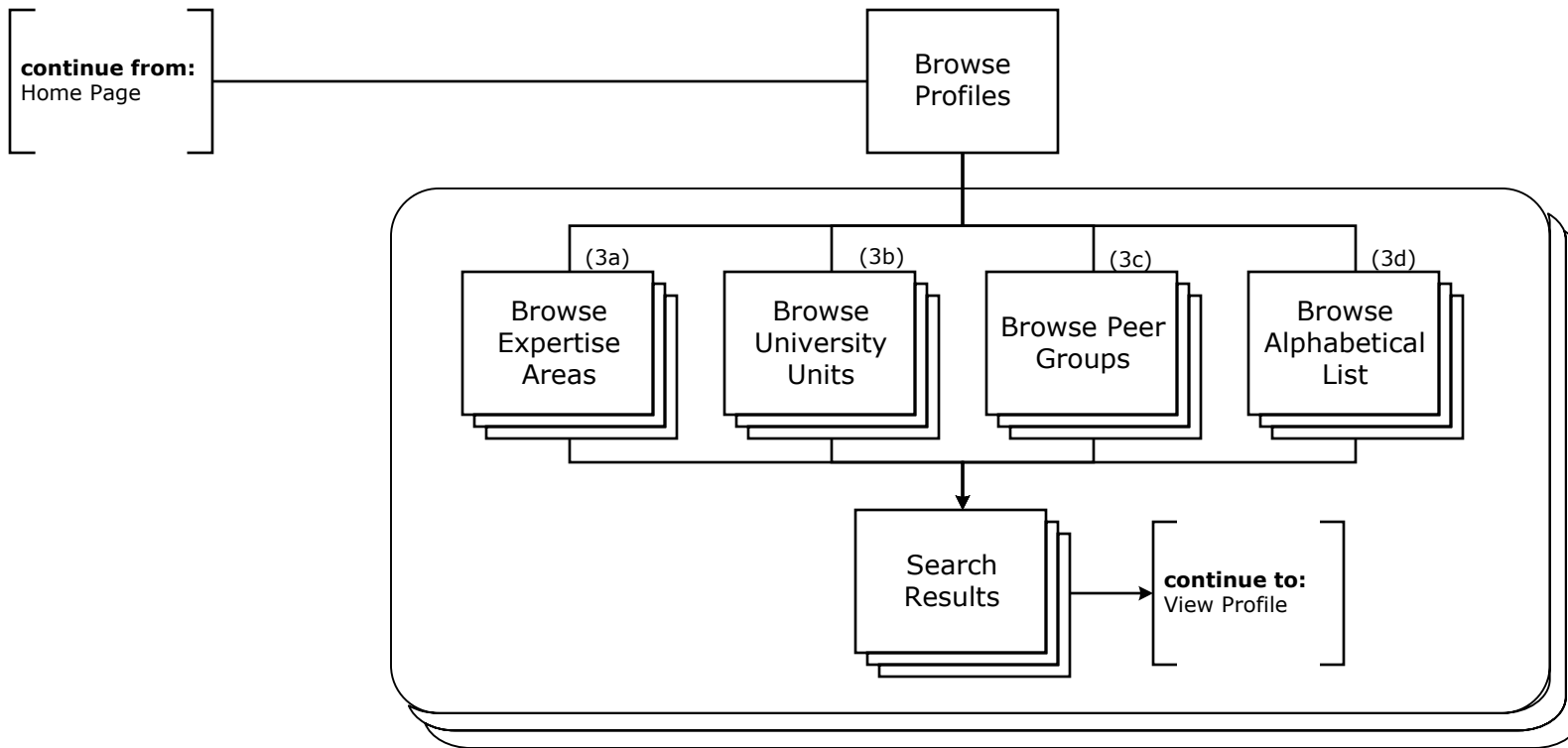
(1c) Link will be available if the user is a Faculty Member or is authorized by a Faculty Member to view their Profile.

(1d) Link will be available if the user is a Vocabulary Manager.

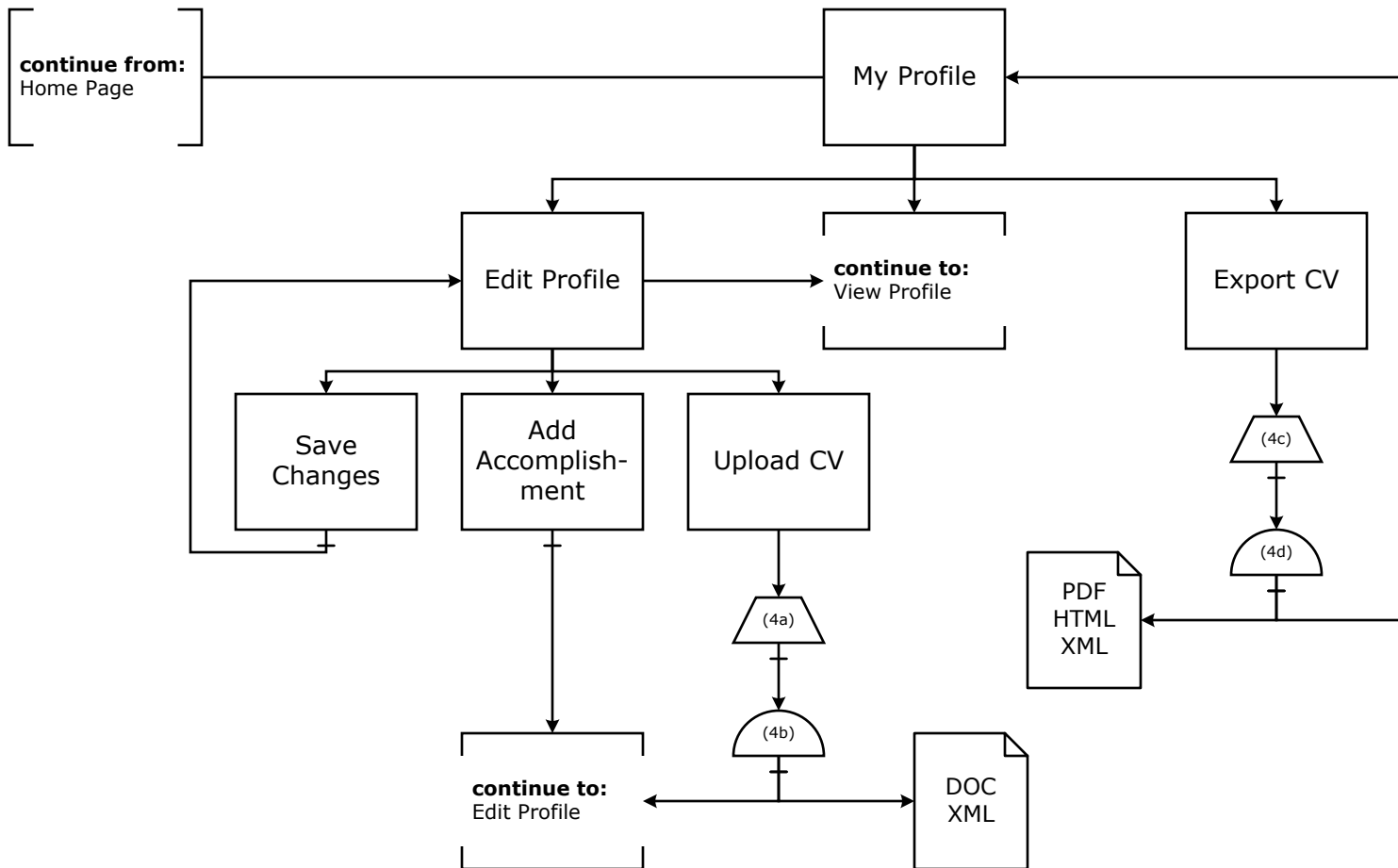


(2a) Certain fields in search results will be linked: faculty member's name, university unit(s), area(s) of expertise, and language usage group(s). If the faculty member's name is selected, user will be sent to View Profile. Otherwise, the search will be re-run based on the field & value selected.

(2b) From the View Profile screen, a link back to the Search Results will be available.



- (3a)** Items here will be listed hierarchically by Expertise. Expertise Areas will be generated from the Vocabulary.
- (3b)** Items here will be listed hierarchically by University Unit. Units will be determined by the University Administration.
- (3c)** Items here will be listed hierarchically by Language Usage Group (LUG). LUGs will be generated from the Vocabulary.
- (3d)** Items here will be listed alphabetically by Last Name or by first Name.



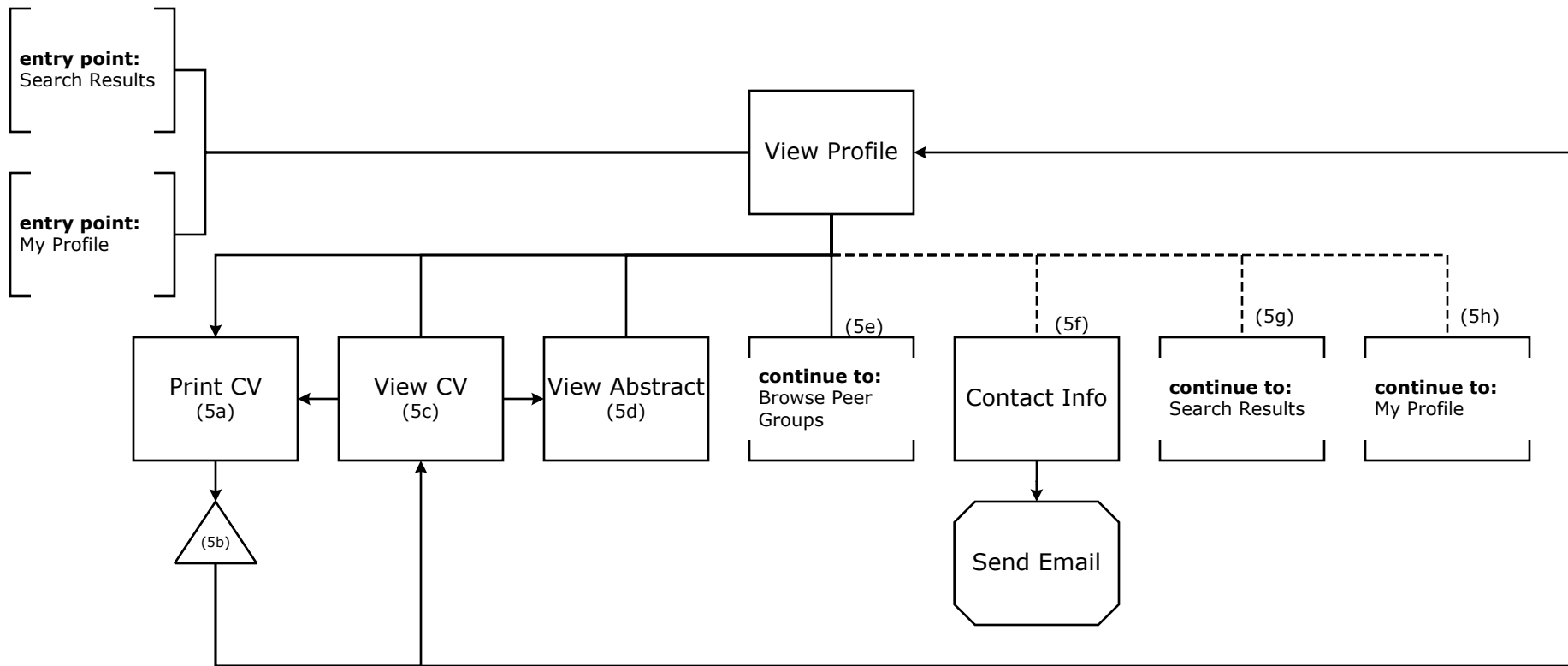
(4a) User selects a file to upload to the system from their hard drive.

(4b) Upload starts and user is sent to Edit Profile.

(4c) User selects a file type to export the CV as.

(4d) Download starts and user is sent to My Profile.

View Profile



(5a) CV will be displayed in printer-friendly format.

(5b) Link will send user back to page from which they came.

(5c) Profile will be displayed in standard CV format.

(5d) Abstract will be displayed in pop-up window.

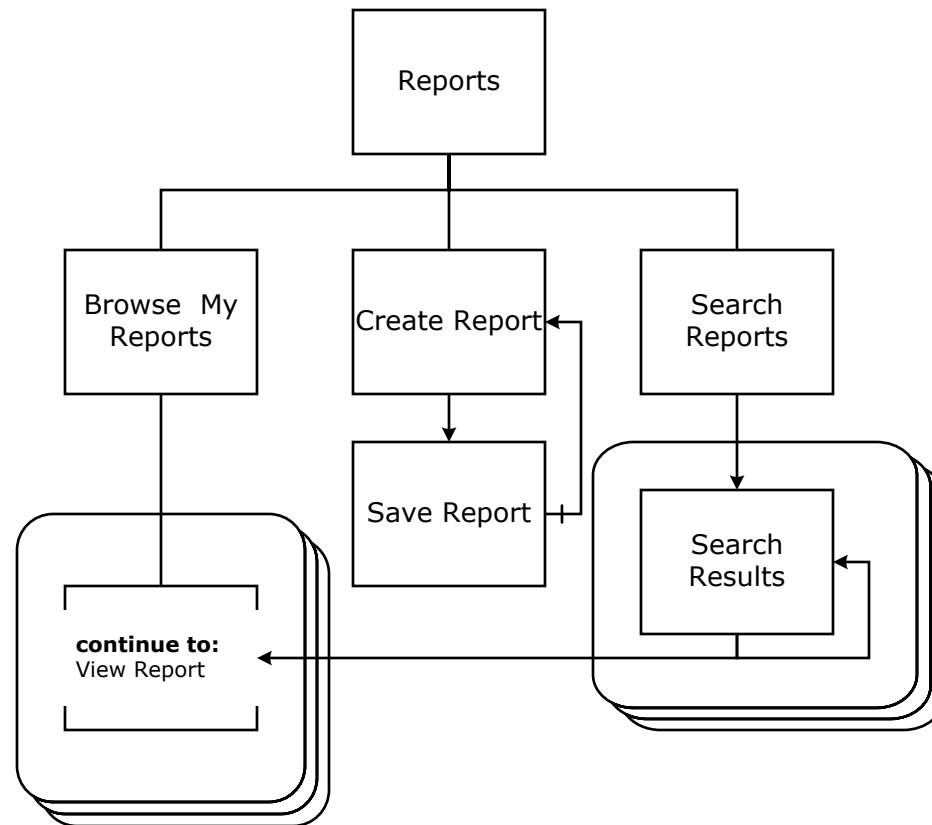
(5e) Link label: "Find similar Faculty Members".

(5f) Link will be displayed if Faculty Member has chosen to allow their contact information to be viewable by others.

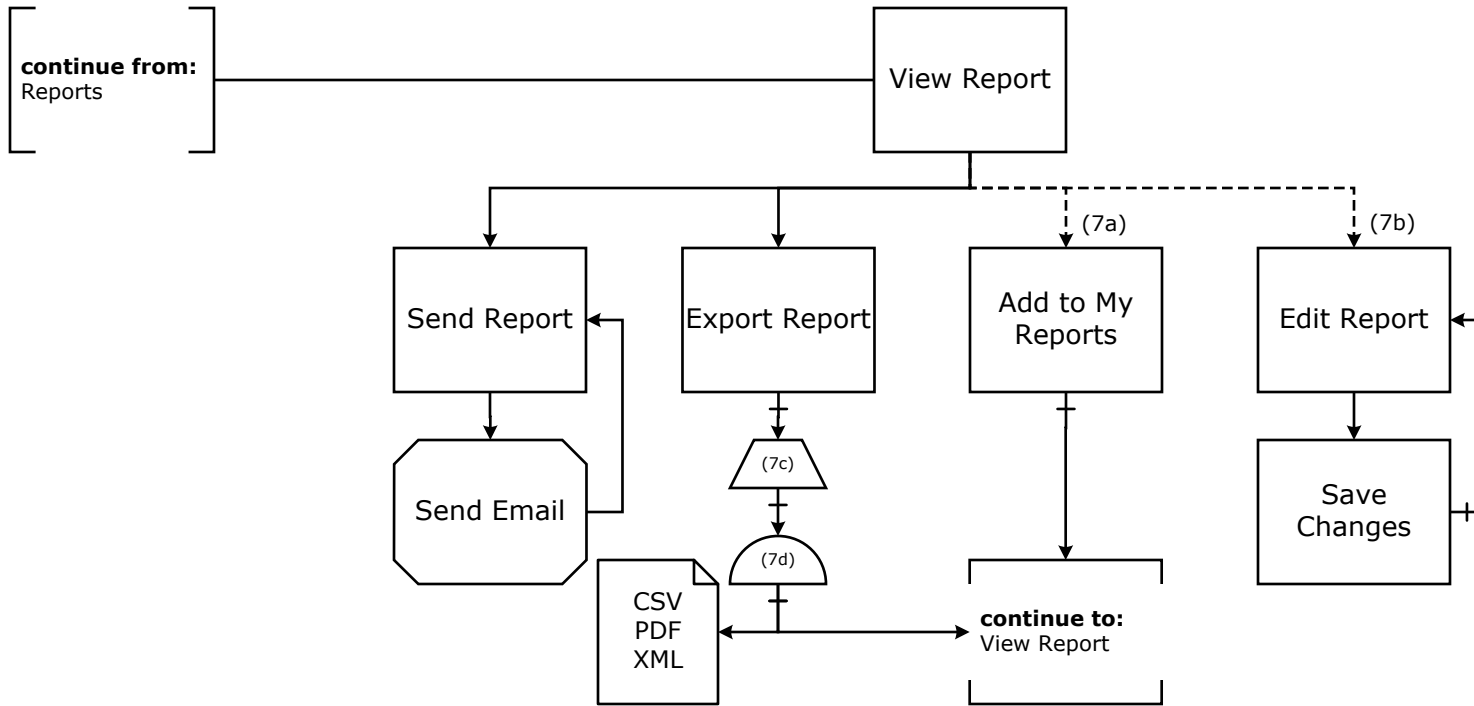
(5g) Link label: "Return to Search Results"; Link will be displayed if user came from Search Results

(5h) Link label: "Return to My Profile"; Link will be displayed if user came from My Profile

continue from:
Home Page



View Report

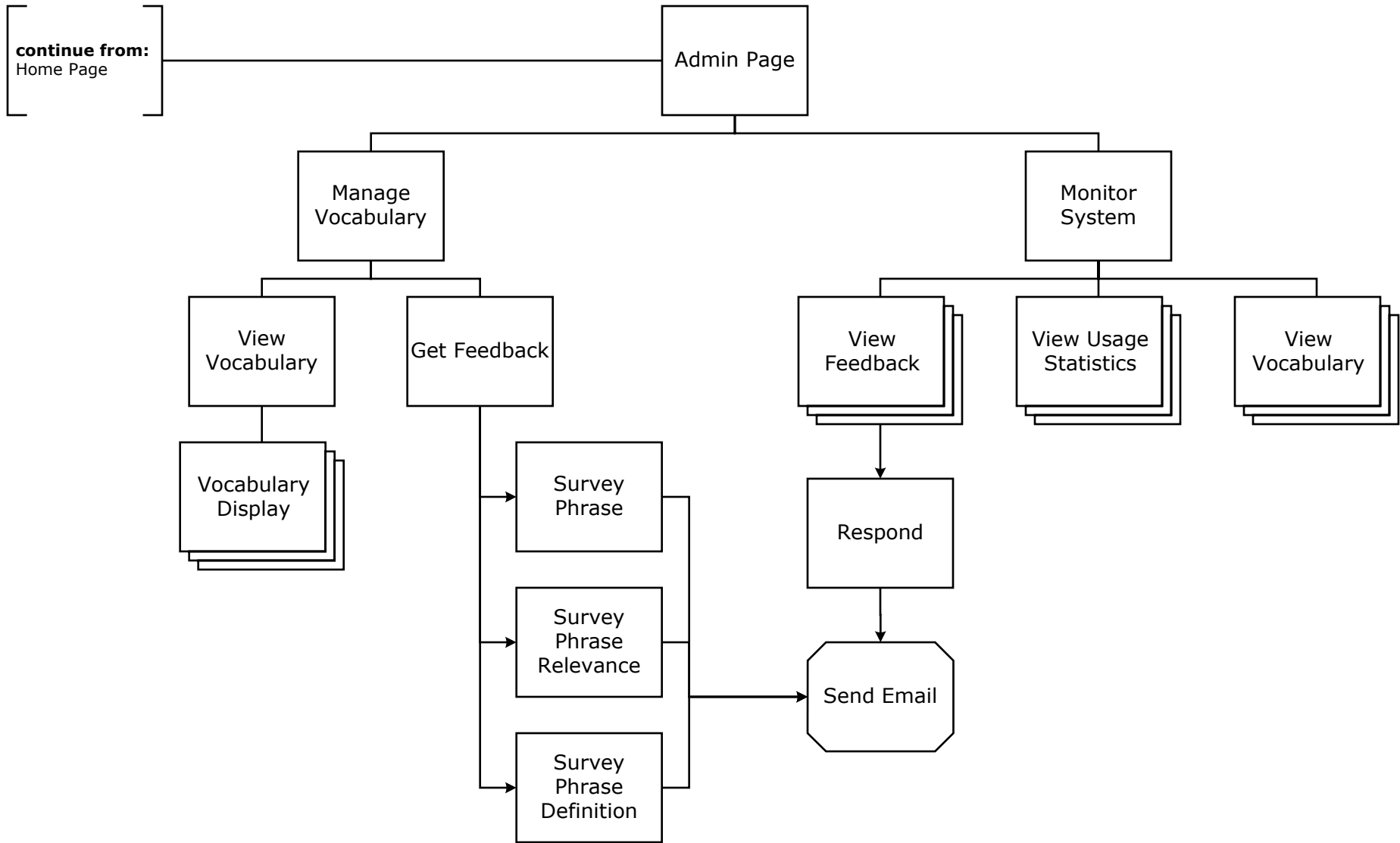


(7a) Link will display if Report is not already in user's My Reports.

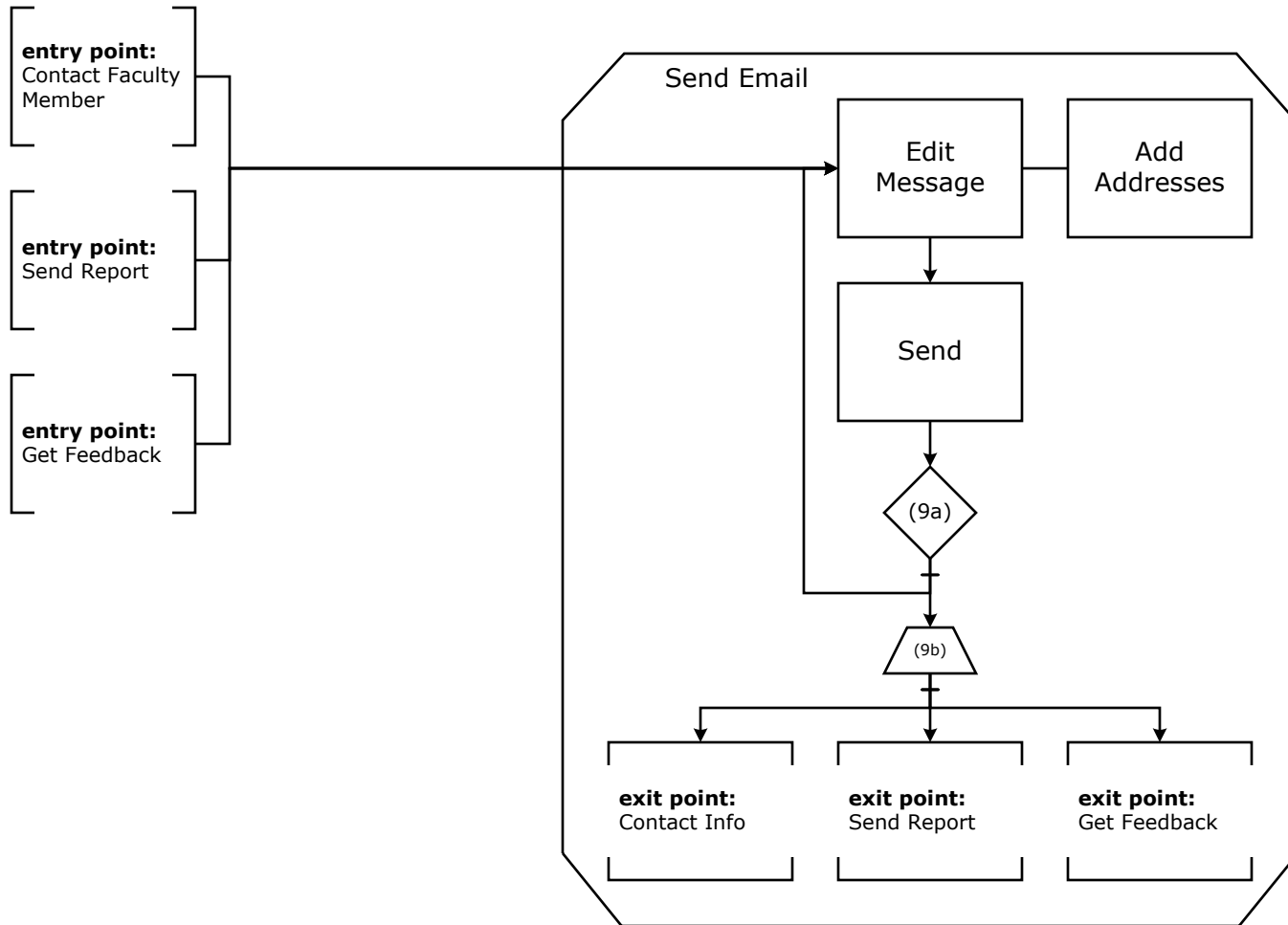
(7b) Link will display if Report is already in user's My Reports.

(7c) User selects file type to download.

(7d) File download starts and user is returned to View Report.



Send Email



(9a) User confirms or cancels sending message.

(9b) User is sent to whichever page they came from.

